



McWade Monitoring Systems
Telephone: +44 (0)161 483 0754
Email: info@mcwade-monitoring.co.uk

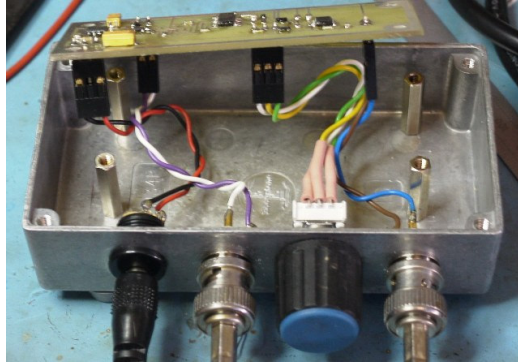
Tachometer Conditioning Products

Type TC-01

Converts a tachometer input pulse into a slope from 0 volts to 10 volts during each rotation

Designed for correlating rotating shaft angle with an acoustic event (or other variables such as vibration, torque etc.) where an analogue parametric input is required.

The TC-01 requires adjustment to set the slope level to the RPM.



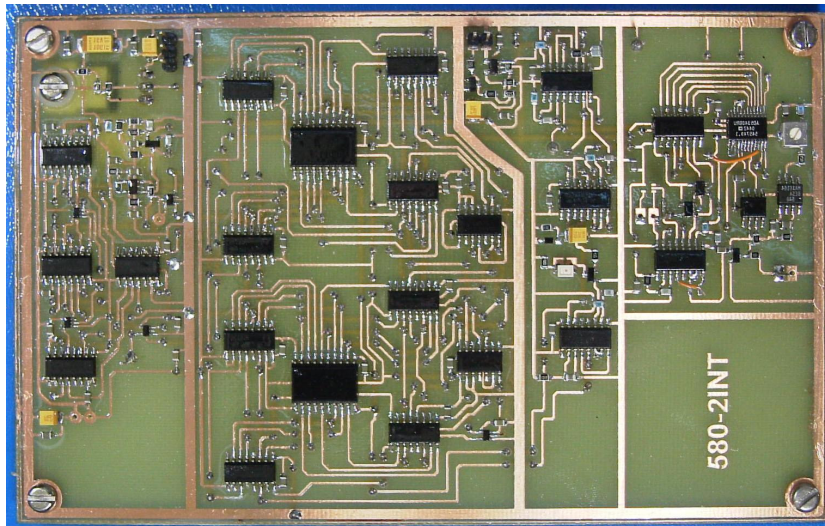
TC-01 during assembly

Type TC-02

Converts a tachometer input pulse into a slope from 0 volts to 3.60 volts during each rotation and outputs a pulse for each degree of rotation.

Designed for correlating rotating shaft angle with an acoustic event (or other variable such as vibration, torque etc.) where an analogue parametric input is required or where a 360 counter is used to keep track of the rotation angle.

The TC-02 is automatic (requires no adjustment) and operates autonomously from 30 RPM to 3600 RPM with a maximum settling time of three revolutions. For a constant rotational velocity, the maximum error at 30 RPM is 0.006° and at 3600 RPM 0.77° per revolution.



TC-02 prototype PCB

Other equipment is available incorporating acoustic emission conditioning circuits.